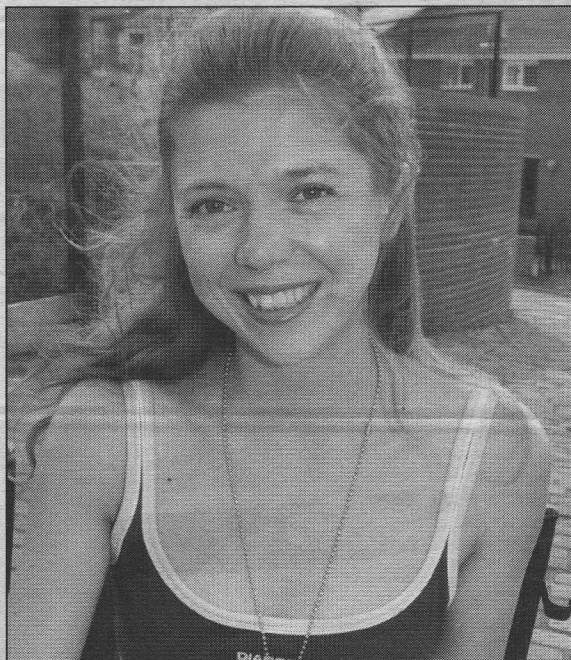


The Star, Wednesday, July 17, 2002

DAREDEVIL SYLVIE TAKES A LEAP



Brave bid: Sylvie is ready to take the plunge to raise money for charity

DAREDEVIL Sylvie Brown is taking the plunge ... for charity.

The 28-year-old, of Upperthorpe, Sheffield, is abseiling off a tall building - despite having multiple sclerosis and being unsure how her body will cope with the challenge.

Sylvie and friends will descend from the top of Sheffield's Hotel Bristol on Sunday to raise money for

the Multiple Sclerosis Resource Centre.

Sylvie, who started to develop MS seven years ago, went public about her condition in 1998 - by jumping out of a plane at 13,000ft in a tandem sky-dive which raised £2,000 for the Multiple Sclerosis Society. Sponsors can contact her on 0114 2726619. Donations payable to MSRC to her at 16 Burlington Court, Sheffield S6 3EX.