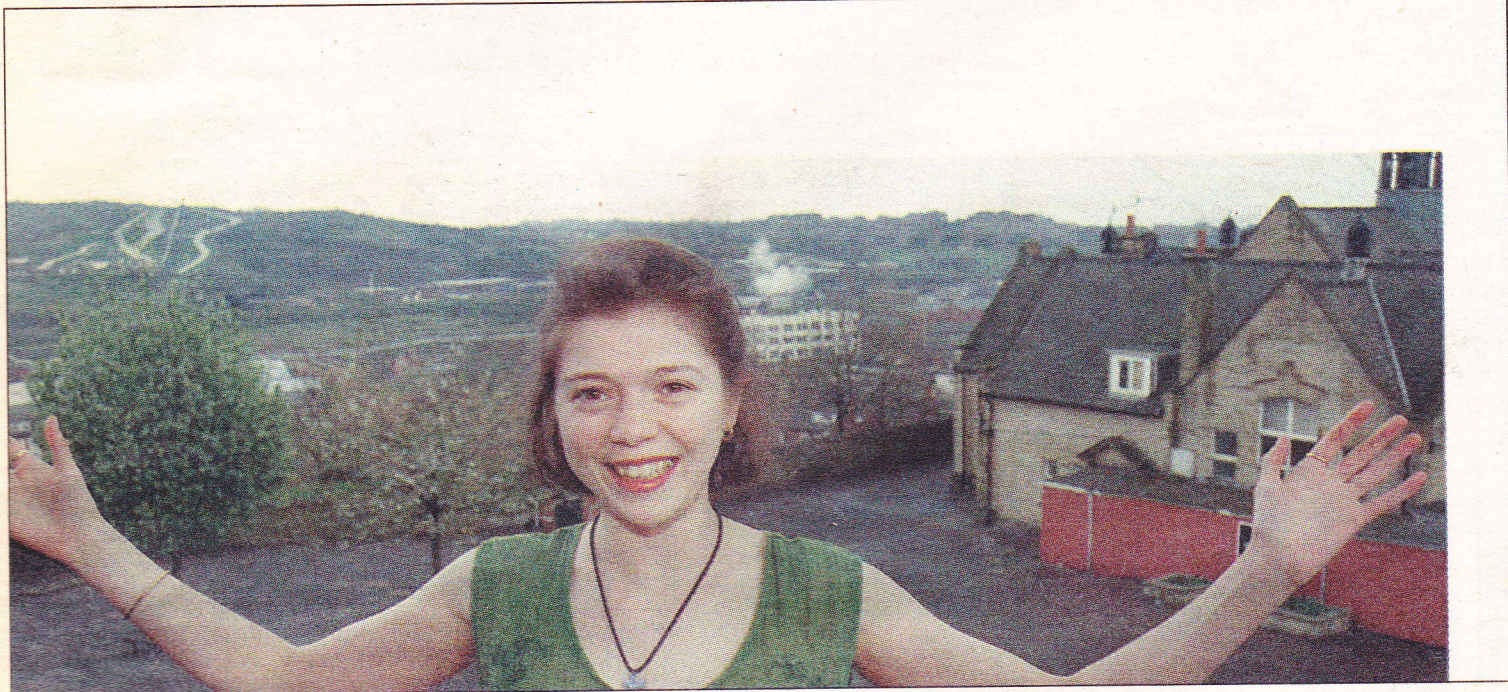


SHEFFIELD TELEGRAPH

Number 445, Friday, April 10, 1998

Forty five pence



Sylvia Brown, fighting multiple sclerosis by jumping out of an aeroplane

PHOTOGRAPH: MIKE WAISTELL

Sylvia's
leap for
charity

Mayor row fans flames

SYLVIA Brown is preparing to jump out of an aeroplane at 13,500ft as her way of fighting multiple sclerosis and raising money for research into the illness at the same time.

The 24-year-old former Tapton pupil will take part in a tandem sky-dive at Nottingham airfield next weekend.

Sylvia, who lives in Boyce Street, Walkley, was officially diagnosed as having MS about a year-and-a-half ago, although she knew something was wrong a couple of years earlier when she began to experience numbness, dizziness and tiredness. Doctors thought she was being neurotic, she says.

Now she has only a limited amount of energy and cannot walk very far. She has physiotherapy twice a week. "Life becomes such an everyday battle with MS, but I am determined to fight," she says. "Doing this tandem sky-dive is my way of fighting."

● Turn to page 4

FRICTION between the two major parties on Sheffield City Council reached a new intensity this week when the ruling Labour group refused to allow a Liberal Democrat to become Lord Mayor to see in the new millennium.

Liberal Democrats accused council leader Mike Bower of breaking a promise to allow an opposition politician the chance to be Sheffield's first citizen; Coun Bower denied making any promise, saying the Liberal Democrats could not be trusted to represent the interests of Sheffield at the moment.

The row is another twist in the increasingly bitter relations between the two parties over the past few years. Inevitably, tensions are heightening at the moment because of the local government elections on May 7 when the Liberal Democrats will try to make fur-

By ANDY WAPLE

ther inroads into Labour's majority. Sheffield is on the Liberal Democrats' hit-list and on Tuesday the party's national leader Paddy Ashdown returned to the city to rally workers and to criticise the council over issues such as the Supertram debts.

The sniping has been almost relentless, reflected in the letters column of the Sheffield Telegraph.

The Labour group has continually claimed that local Liberal Democrats are out to wreck constructive work done on behalf of the city, producing "fantasy budgets" and promising everything to everyone.

It has accused political opponents of "unfit behaviour" in council meetings.

This week Mike Bower wrote to Richard Allan, the Liberal Democrat MP for Hallam, complaining about the behaviour of certain councillors.

Mr Ashdown, who has a "constructive dialogue" with Tony Blair, defended the tactics of the local Liberal Democrats saying they were being merely vigorous in opposition to Labour policies which they could not support.

The row over who should be the Lord Mayor in 1999/2000 fans the flames. The Liberal Democrats claim there is an unwritten agreement that an opposition councillor should be honoured with the top civic post every four years. Therefore, they should have been able to nominate this year's deputy Lord Mayor, who would automatically hold the top post the following 12 months.

● Turn to page 4