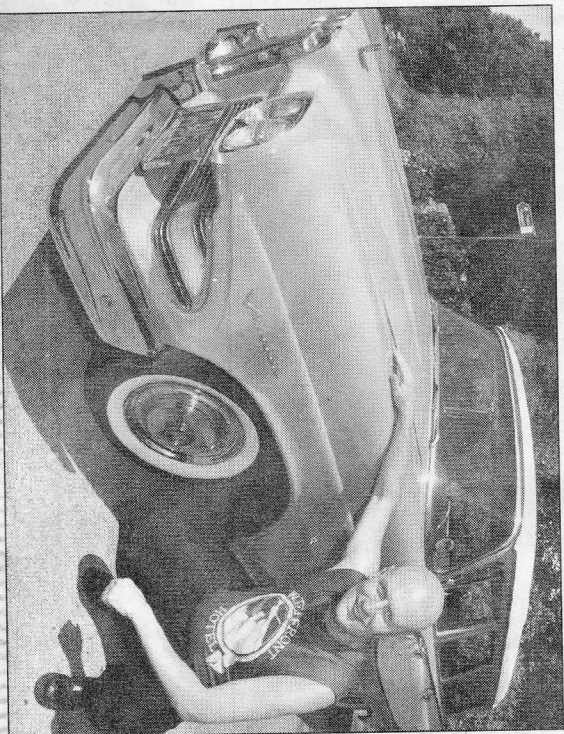
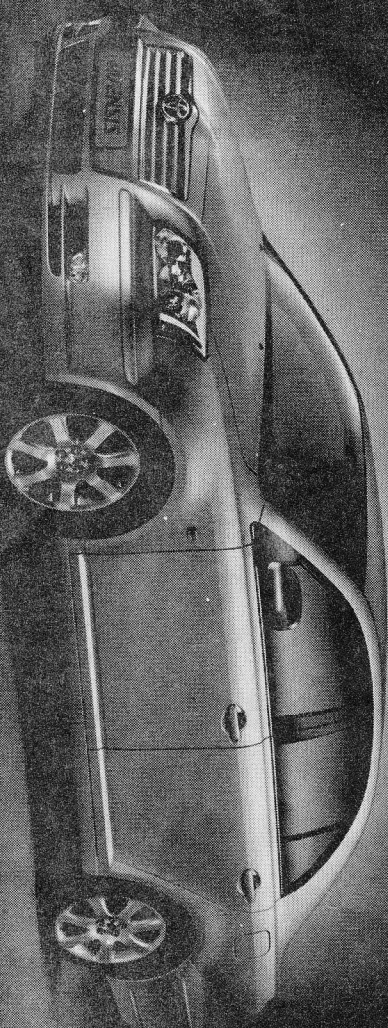


Respect: "When I drive it around I'm amazed by how nice people are. Other drivers stop and let me through. Pedestrians want to look all over it," says Steve



The New Avensis.
Quality speaks for itself.
 (Superior comfort and ride however, can only be appreciated with a test drive.)

the car in front is a
TOYOTA



THE NEW AVENSIS RANGE
FROM £14,000 TO £21,500.

3 YEAR/60,000 MILE WARRANTY

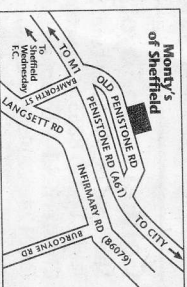
- 9 Airbags including Driver's Knee Airbag
- 8 speaker Radio/Cassette/CD Tuner
- ABS with Electronic Brake Distribution
- Front and Rear Electric Windows
- 17" Alloy Wheels
- Dual Zone Climate Control
- Air Conditioning
- Turn by Turn Satellite Navigation with Electronic Traffic Avoidance
- Cruise Control

MONTY'S OF SHEFFIELD
 260 Penistone Road, Sheffield.
 Telephone: 0114 285 5558

Opening Hours: Monday-Friday, 0900-1900,
 Saturday 0900-1700, Sunday, 1030-16.30

www.toyota.co.uk/montys

- Contract Hire
- Leasing
- Motability
- Service
- Bodyshop
- Parts
- Competitive Finance



New Avensis 2.0 VTI: Saloon. Official Fuel Consumption Figures in mpg (l/100km). Urban 26.6 (10.6), Extra Urban 42.8 (6.6), Combined 34.9 (8.1). CO2 Emissions 191 g/km.
 Model and specification shown: New Toyota Avensis 2.0 VTI-1 T Spirit Saloon manual £19,500 on the road. Prices shown are manufacturer's recommended retail price and include VAT, delivery charge, number plates, one year's vehicle excise duty and £25 first registration fee. Metallic paint £300 optional extra.